

NEW BREND A

Technical Presentation
Harley Slade P.Ge
July 2024

Project History

2017: Claims amalgamated to form the New Brenda project.

2018: Outcrop of altered intrusive rocks containing chalcopryite sampled 0.67% Cu and 46.1ppm Ag.

2021: Aeromagnetic survey highlights a 2 km diameter ring centered near outcrop showing.

2023: 700 geochemical soil samples delineate two polymetallic anomalies (Cu, Ag, Mo). One within the magnetic target and the other extends into the eastern broad magnetic low.

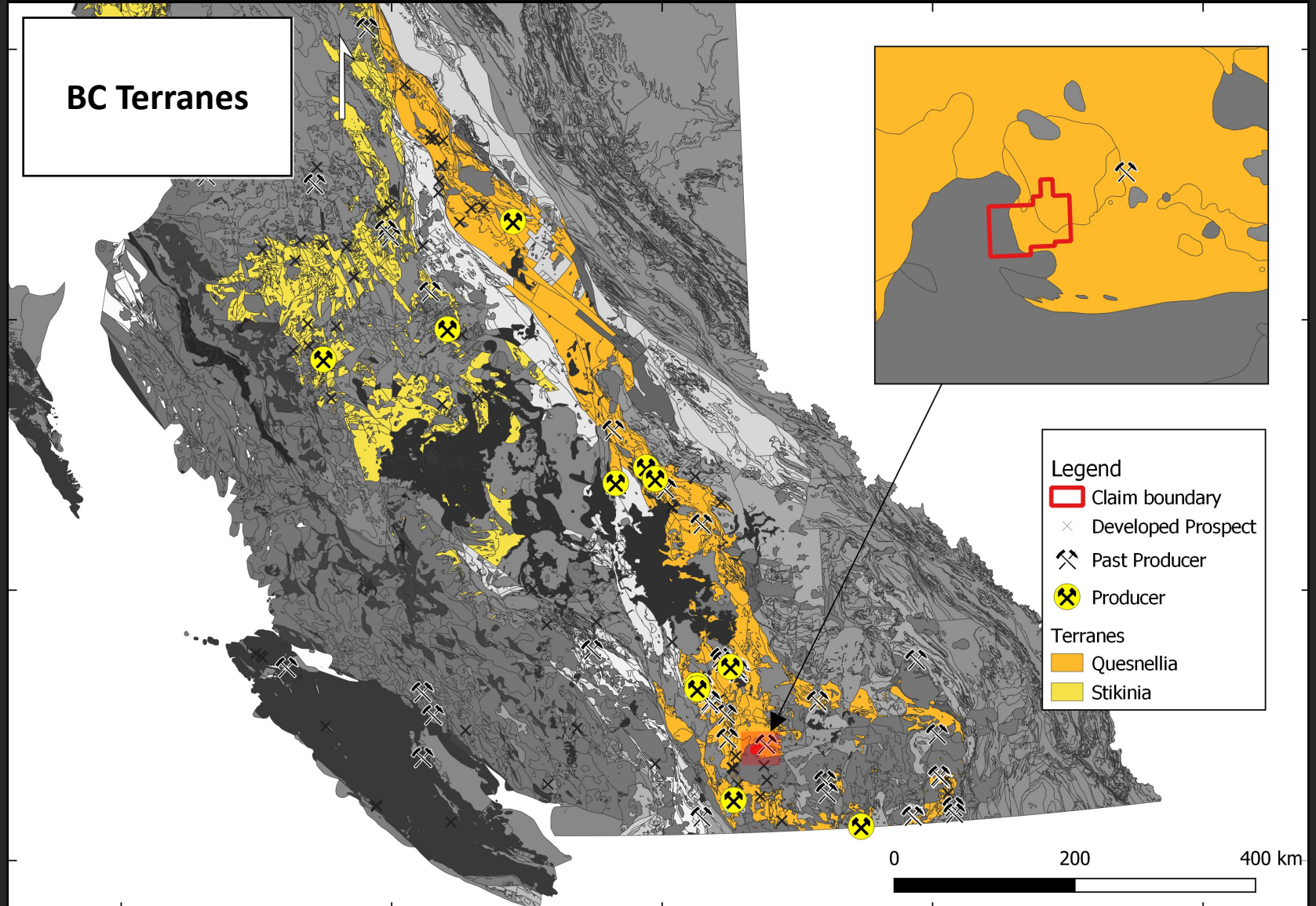
2024: IP survey highlights two chargeable anomalies measuring 1000m and 1500m under identified geochemical and magnetic targets.

Prospectivity

- Greenfield porphyry exploration project 12 km west of the past producing Brenda mine
- Located in the Quesnel terrane along the contact between Nicola group and Pennask intrusion
- Accessible from highway 97c by an extensive network of forestry service roads
- Strong evidence for a porphyry building with coincident geochemical, petrographic and geophysical signatures.

Resources and reserves on other projects are not a guarantee of exploration success

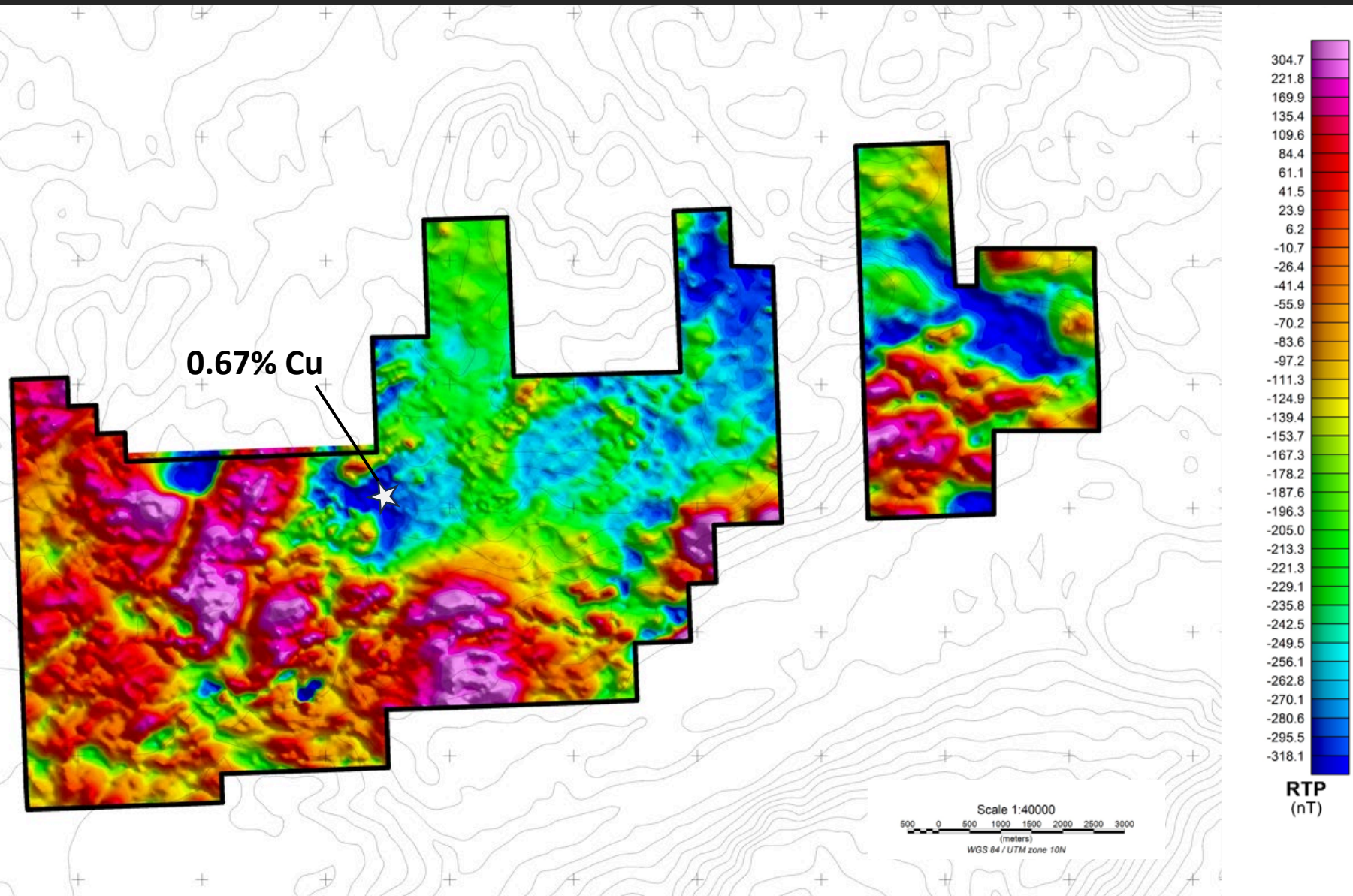
Context



Mineralization



Magnetic Survey



Petrology

Plate: B

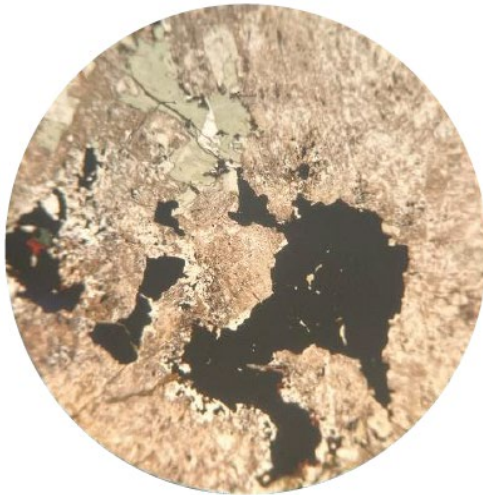


Plate: A

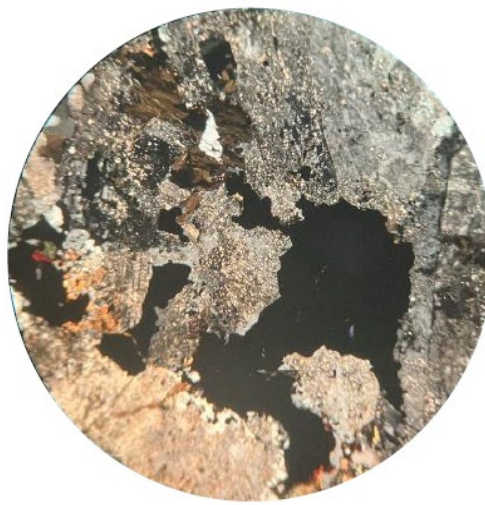
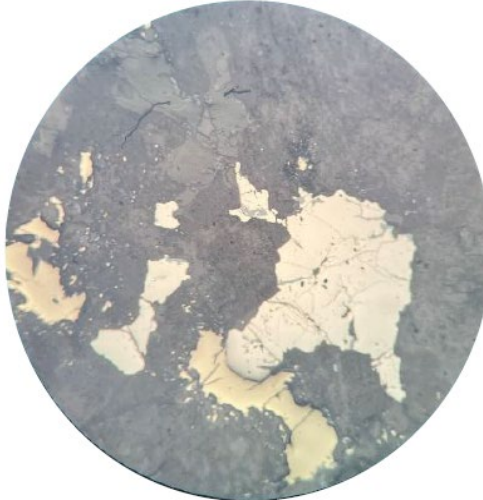
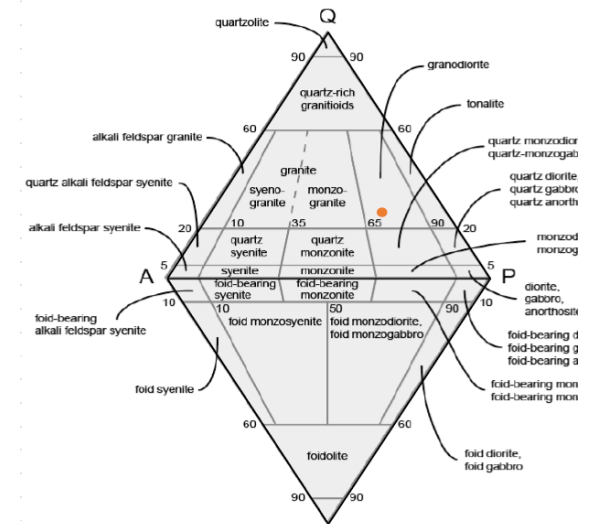


Plate: C



- A. Plane polarized light (Note sericite, carbonate and chlorite alteration)
- B. Crossed polarized light
- C. Plane reflected light (note droplets of CPY and PY)



Notable Textures:

- Droplets/spattered sulphides (See plates)
- Supergene enrichment of chalcopyrite to chalcocite
- Poikilitic Quartz surrounding plagioclase and hornblende pseudomorphs

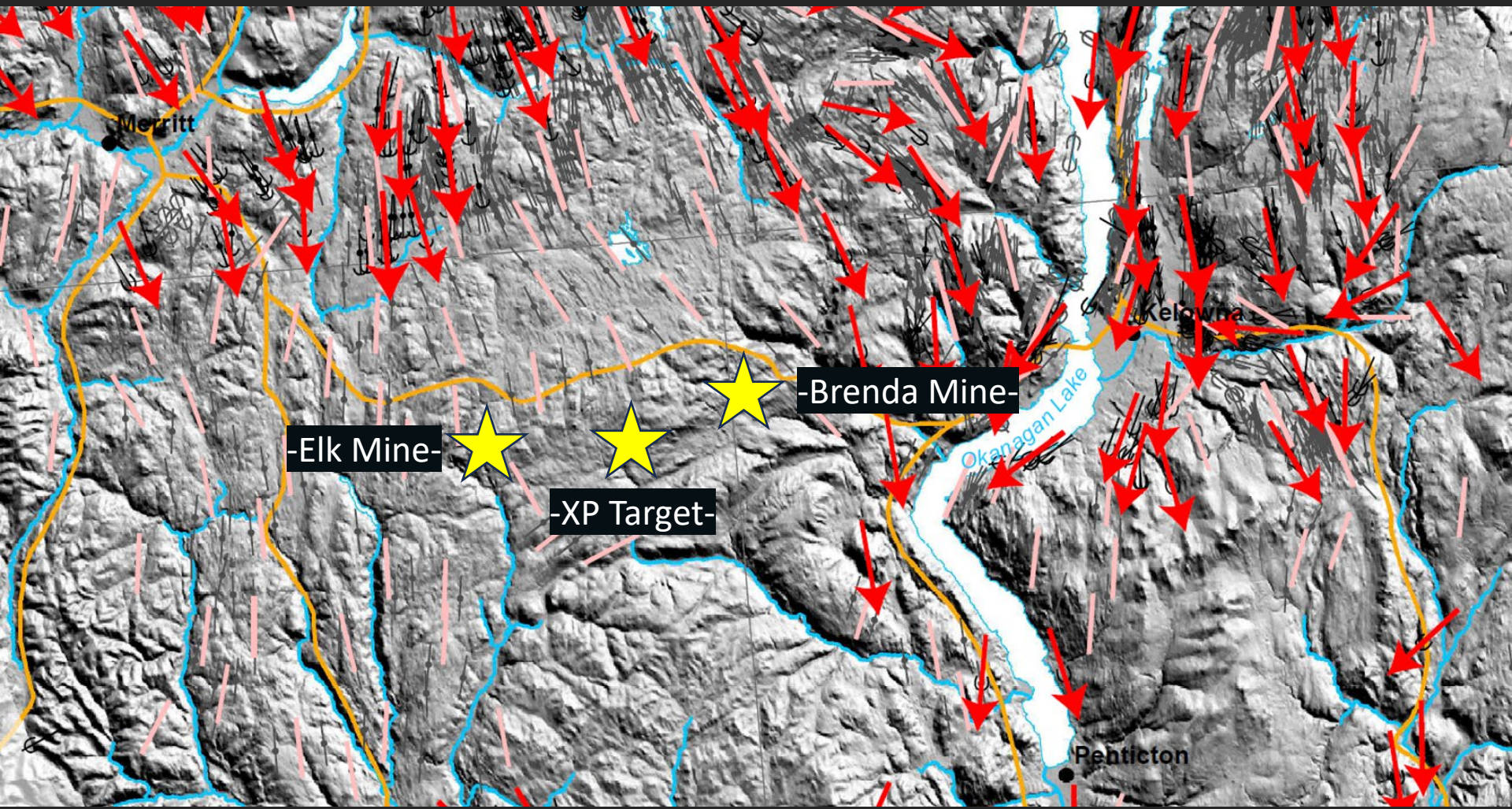
Alteration:

Pervasive Sericite, carbonate alteration. Significant chlorite overprinting.

Rock Name:

Buff weathering-medium grey, medium grained biotite-chlorite after hornblende, xenolithic granodiorite.

Glaciation

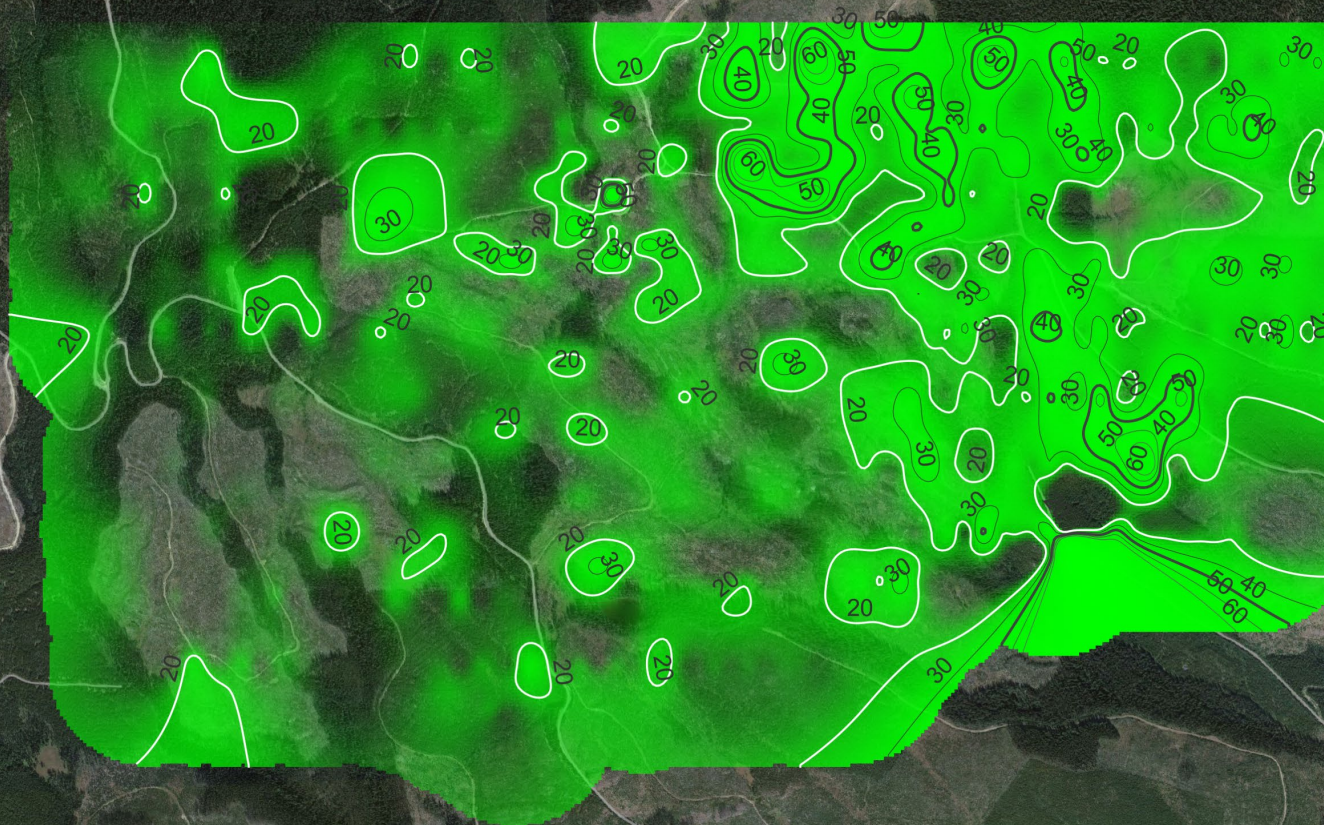
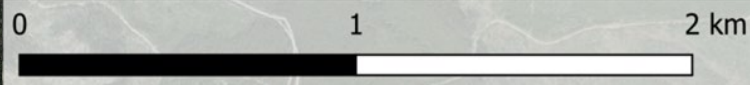


Soil Anomalies

New Brenda Soil grid

Flow metals 2024

WGS84 Zone 10N



Legend

 Claim boundary

Soil Anomaly (ppm)

 Bi

 Cu

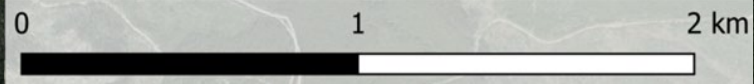
 Mo

Soil Anomalies


New Brenda Soil grid

Flow metals 2024

WGS84 Zone 10N



Legend

 Claim boundary

Soil Anomaly (ppm)

 Bi

 Cu

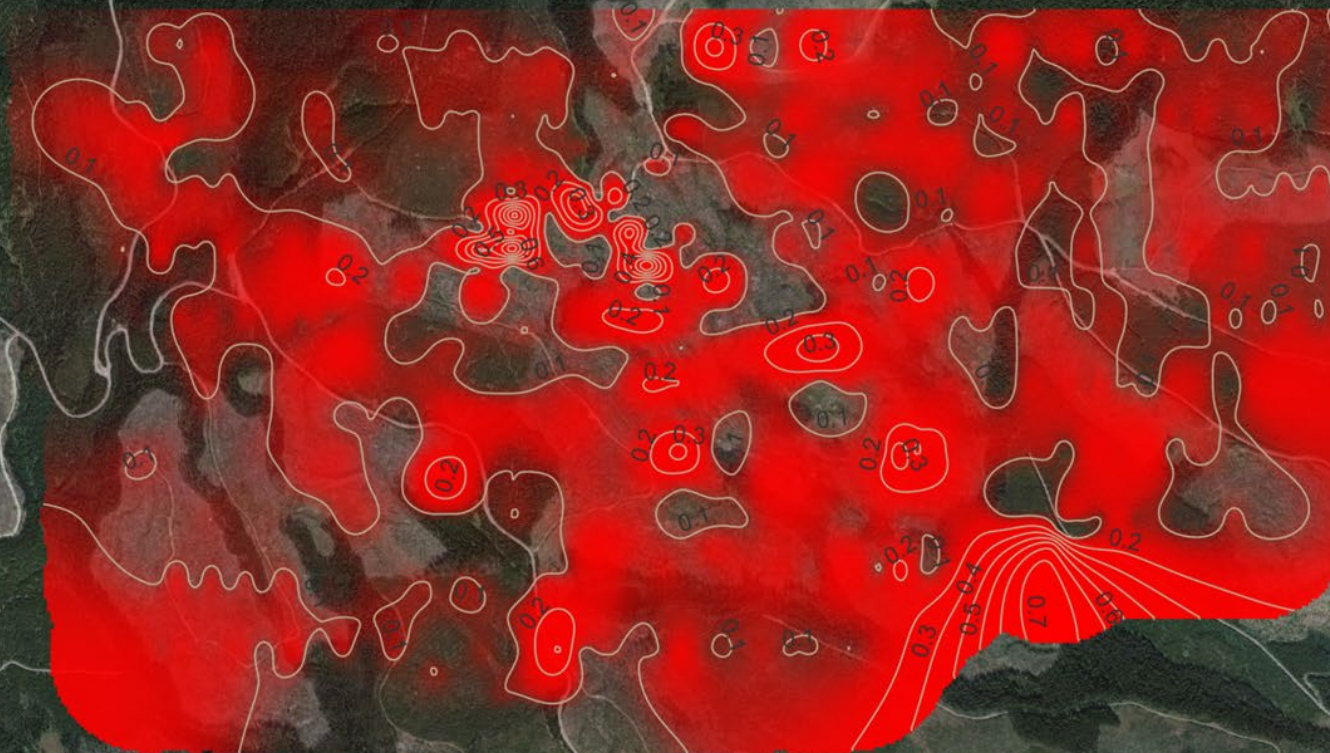
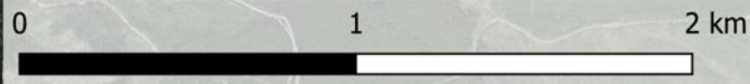
 Mo

Soil Anomalies

New Brenda Soil grid

Flow metals 2024

WGS84 Zone 10N



Legend

 Claim boundary

Soil Anomaly (ppm)

 Bi

 Cu

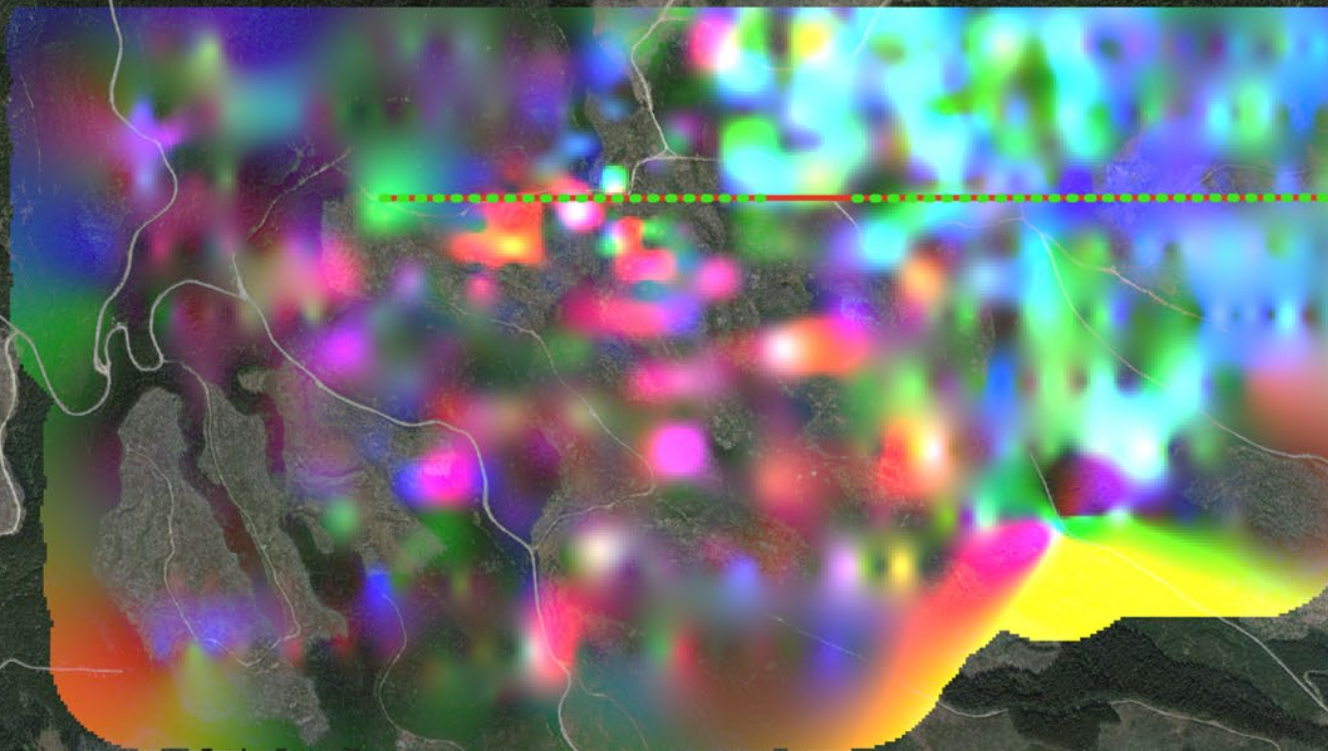
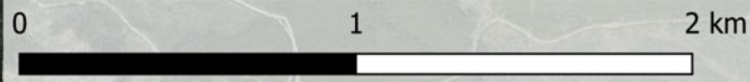
 Mo

Soil Anomaly RGB Plot

New Brenda Soil+IP line

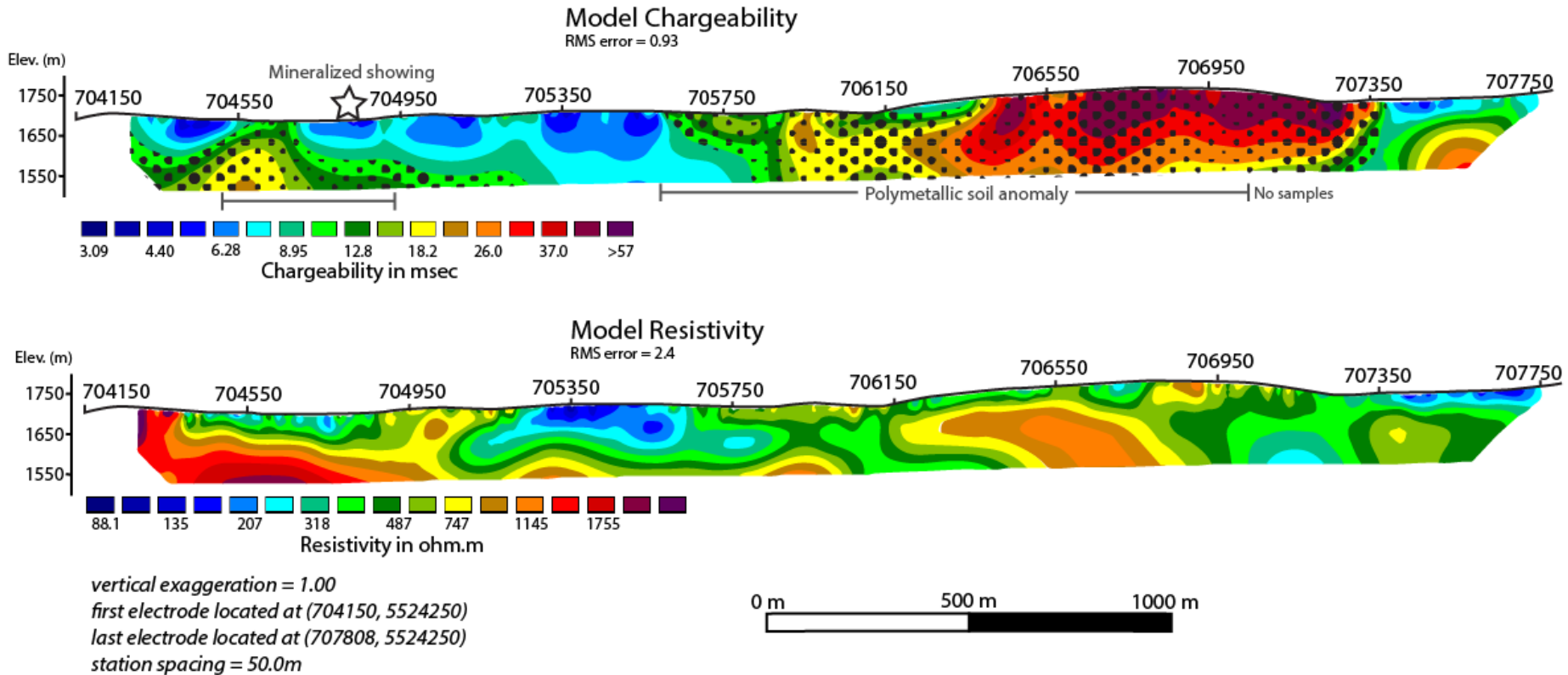
Flow metals 2024

WGS84 Zone 10N



- Legend
- Claim boundary
 - Soil Anomaly
 - Bi
 - Cu
 - Mo
 - IP line
 - Survey
 - Chrg. anomaly

Induced Polarization Survey - Inversion



Next Steps

- Raise funds through partnership or financing
- Expand soil sample grid to define north and south edge
- Detailed prospecting of high chargeability zone
- Parallel IP lines to create a 3D inversion
- Wider IP spacing over showing to analyze deeper
- Define drill targets and commence maiden drilling

Disclaimer

Data Verification

Detailed data verification statements are presented within the Company's press releases pertaining to the project and as posted on SEDAR+ and the Company's website.

Qualified Person

Robert Cameron, P.Geo is the qualified person for the company as defined in the National Instrument 43-101 and has reviewed the technical information in the is presentation. The presentation was prepared by Harley Slade, P.Geo, a director of the company and the project manager.

Acknowledgement

This Corporate Presentation is based on information available from the company and third-party sources. You acknowledge and represent to Flow Metals that you have accepted the terms of this Important Notice. This Presentation does not purport to contain all the information that a prospective investor may require in connection with potential investments in Flow Metals. Do not treat the contents of this Presentation, or any information provided in connection with it, as financial advice, relating to legal, taxation or investment matters.

No representation or warranty is made by Flow Metals or any of its advisers, agents or employees as to the accuracy, completeness or reasonableness of the information in this Presentation or provided in connection with it. No information contained in this Presentation or any other communication in connection with it is a promise or representation and no representation or warranty is made as to the accuracy or attainability of any estimates, forecasts or projections set out in this Presentation. No liability will attach to Flow Metals, with respect to any such information, estimates, forecasts or projections.